

Claverdale Road, Brixton, SW2

4 bedroom house - terraced to let

£850 Per Week

Part furnished

Property Details

This beautiful terrace house has been owner occupied until now which is evident when considering the immaculate condition in which it is presented! A walk through will reveal the wide hallway and spacious reception room upon entering the house. Proceeding to the rear will take you past the first double bedroom and through to the wonderful, bright and airy kitchen (recently installed, modern country style) with breakfast area which leads you out to the established SE facing garden. When you head upstairs you will find three further, spacious, double bedrooms and the modern, recently fitted, bathroom. Throughout this beautiful home you will appreciate the thoughtfulness that has gone into creating a superb, comfortable, home over the years. Nearby attractions include Brockwell Park (five minutes), Herne Hill (within ten to fifteen minutes), Brixton central (also ten to fifteen minutes) and a host of excellent restaurants and bars throughout the area. This is a unique, quirky and very well presented house which is perfect to make your next home!

Features

- Recently redecorated
- Period features
- Close to Brockwell park
- Newly refurbished kitchen and bathroom

Council tax band E EPC rating D (59)



Claverdale Road, Brixton, SW2

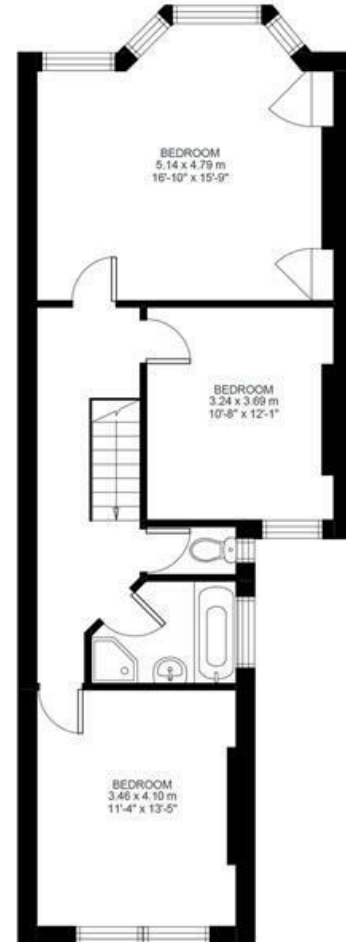
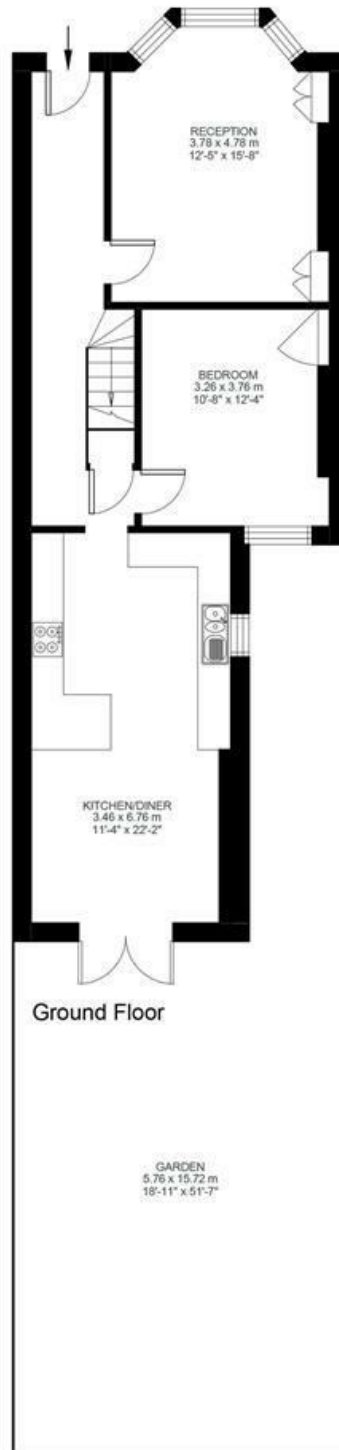


4 Bed House
Approx internal area:

1440 sqft 134 sqm

While we do try our very best, floor plans are produced as a guide only and we take no responsibility for the precise accuracy with which any property is represented

Claverdale Road



Claverdale Road, Brixton, SW2

